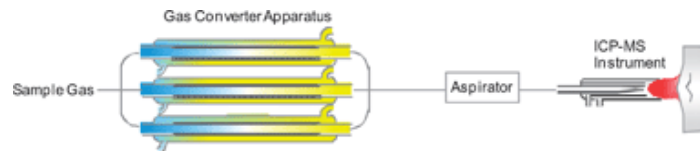


Journal of Analytical Atomic Spectrometry

J. Anal. At. Spectrom., 2008,23, 1125-1129

<http://pubs.rsc.org/en/Content/ArticleLanding/2008/JA/b802302f#!divAbstract>

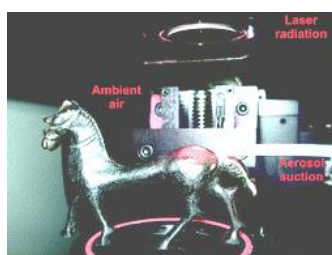
Real-time multielement monitoring of airborne particulate matter using ICP-MS instrument equipped with gas converter apparatus



J. Anal. At. Spectrom., 2010,25, 142-147

<http://pubs.rsc.org/en/content/articlelanding/2010/ja/b924425e/unauth#!divAbstract>

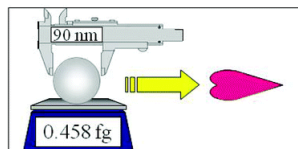
Development of direct atmospheric sampling for laser ablation-inductively coupled plasma-mass spectrometry



J. Anal. At. Spectrom., 2010,25, 947-949

<http://pubs.rsc.org/en/content/articlelanding/2010/ja/c004790b/unauth#!divAbstract>

Real-time monitoring and determination of Pb in a single airborne nanoparticle



J. Anal. At. Spectrom., 2013,28, 831-842

<http://pubs.rsc.org/en/Content/ArticleLanding/2013/JA/C3JA50044F#!divAbstract>

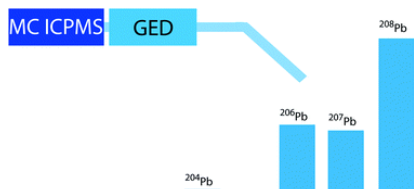
Aerosol entrainment and a large-capacity gas exchange device (Q-GED) for laser ablation inductively coupled plasma mass spectrometry in atmospheric pressure air



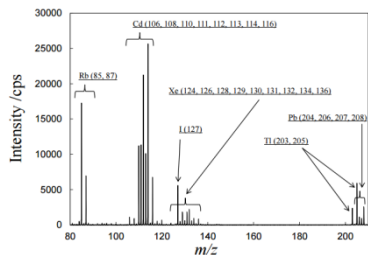
J. Anal. At. Spectrom., 2013,28, 1513-1521

<http://pubs.rsc.org/en/Content/ArticleLanding/2013/JA/C3JA50126D#!divAbstract>

Determining isotope ratios using laser ablation sampling in air with MC-ICPMS

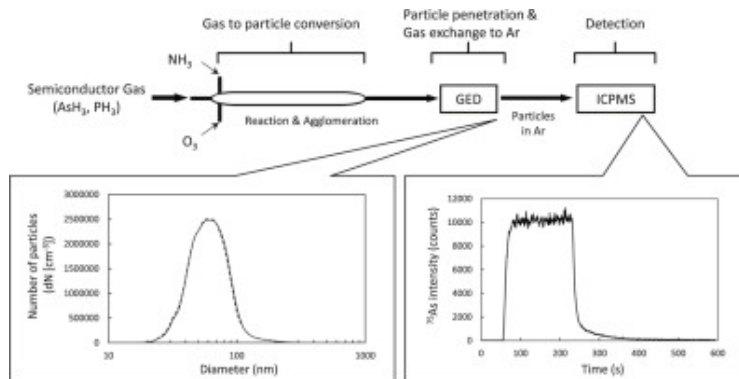


Direct Simultaneous Multi-element Analysis in Tobacco Smoke by ICP-TOFMS after Gas Exchange

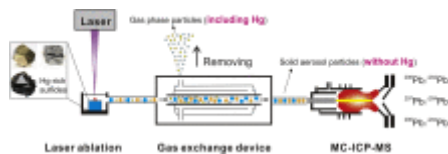


Analytica Chimica Acta

Direct analysis of ultra-trace semiconductor gas by inductively coupled plasma mass spectrometry coupled with gas to particle conversion-gas exchange technique



Direct lead isotope analysis in Hg-rich sulfides by LA-MC-ICP-MS with a gas exchange device and matrix-matched calibration



Analytical chemistry

Gas to Particle Conversion-Gas Exchange Technique for Direct Analysis of Metal Carbonyl Gas by Inductively Coupled Plasma Mass Spectrometry

